

32" LCD TV

The TV of the future has more possibilities than just viewing images over the cable... The V²Max VL-3200 uses advanced technologies that transform the living room into a highly interactive multimedia centre. The screen can be connected to a pc, tv, DVD and video. You can surf the net on it, play games, watch TV or DVD's with it. The PIP-technology (Picture in Picture) allows the spectator even to use it at the same time as a TV and PC. The real movielover can view its favorite films in Wide Screen, or in one of the other 4 display modes.

Model: VL-3200



SPECIFICATIONS

<i>Screen size (Diagonal)</i>		32"
<i>Panel Technology</i>		TFT
<i>Aspect ratio</i>		15:9 / 16:9
<i>Native panel resolution</i>		1366x768 (WXGA)
<i>Max PC resolution</i>		1024x768 (XGA)
<i>Max Colors</i>		16,7 Mio
<i>Brightness/Luminance</i>		450 nits
<i>Contrast Ratio</i>		500:1
<i>Viewing Angle (H/V)</i>		170°
<i>Connectivity</i>	PC	Analog
	Video	Composite 2x S-Video 2x / Scart Component
<i>Cable TV Connectivity</i>		IEC Type euro
<i>Detachable side stereo speakers</i>		Yes (2x15Watt)
<i>Headphone output</i>		3,5mm jack
<i>Audio out</i>		Stereo Cinch
<i>TV Tuner</i>		Built-in (100ch) PAL BG, I, DK Secam
<i>Teletext</i>		Yes
<i>OSD language</i>		Fr, UK, NI, Ger, Sp, It
<i>Equalizer</i>		Yes
<i>HDTV support</i>		480p/720p/1080i
<i>Metal casing</i>		Yes steel/alu
<i>Casing color</i>		Alu brushed
<i>Picture in Picture (PIP)</i>		Yes (scaleable)
<i>Protective Glass</i>		Yes
<i>Wall mount</i>		Yes optional
<i>Power Consumption</i>		Max 147Watt
<i>Remote Control</i>		Yes (Batt incl.)

Power supply
Warranty
Package includes

Dimensions :
Without speakers

With speakers

speaker dimensions

Weight

Integrated
2 years (Carry-in)
Display, tablestand, side
speakers, support for
speakers

wxhxd
790.2x510.7x91
790.2x550.2x91
(with table stand)
970.2x510.7x91
970.2x550.2x91
(with stand)
90x510.7x50
25 Kg

* requires special wall mounting kit

HDTV Ready

V²max LCD TVs are capable of handling even high definition digital broadcast and reproducing highly detailed, refined pictures. Also, the text and graphic images in digital broadcasting contents come through more clearly with V²max LCD TVs.



HDTV-ready Component Inputs

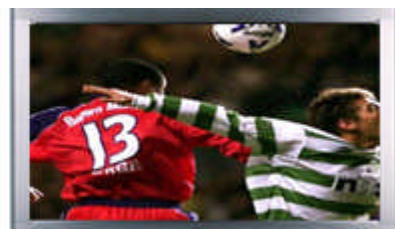
The VL-3200 has one component video input, allowing you to connect an optional HDTV (digital television) receiver and a progressive scan DVD player.

The Component (HDTV) input is capable of receiving 1080i, 720p and 480p video signals; 1080i signals are converted to 720p signals for display.

The PC (HDVD/PC) input is capable of receiving 480p and 480i video signals. These inputs allow you to connect both a HDTV set-top box and PC Compatible.

Advance TV Function

This supports Tele- text, Aspect Ratio (16:9/15:9/4:3/Zoom1 ~ 5), PIP (5 Position), Picture & Sound Swap, WSS (wide screen signal), Multi -Tuner system.



Digital Zoom

You can highlight any information or image on

Advanced image processing

Precision scaling and image processing featuring

the screen. A portion of the screen image can be enlarged up to 5 times in smooth steps.

The image can also be frozen and panned.

3Dcomb filter and Advanced De-interlacing and Film detection, Gamma correction and Noise Reduction.

Those functions allows very definition screen not seen with other brands.