



Introduction to the CreveTope system:  
Intensive shrimp farming with bioflocs  
Visit to shrimp farm in Belgium  
Workshop on reproduction of shrimp



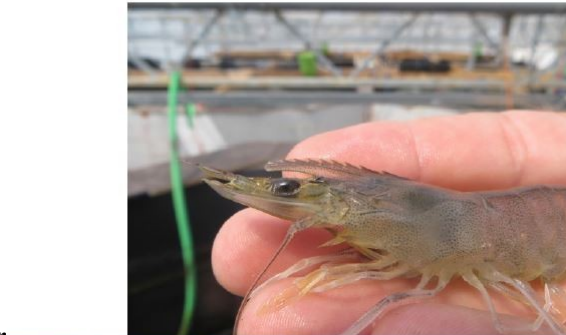
**Date: 7 & 8 September 2021**

**Time: 08:30 till 18:00**

**Limit: maximum 25 persons – book early to ensure your place**

## Intro

CreveTec has built a shrimp farm in Ternat, only 15 km from Brussels, more than 100 km from the coast. This farm uses bioflocs to maintain water quality. The farm has a capacity to produce 4 ton of fresh *Litopenaeus vannamei* shrimp per year. All water is continuously and 100 % recycled for more than 6 years already. The farm started operation in April 2015 and is in full operation since September 2015. The farm also has its own broodstock, maturation facility and larval rearing and is self-sufficient for the production of its own broodstock, postlarvae and produces his own feed.



**Address of the seminar (and farm):**

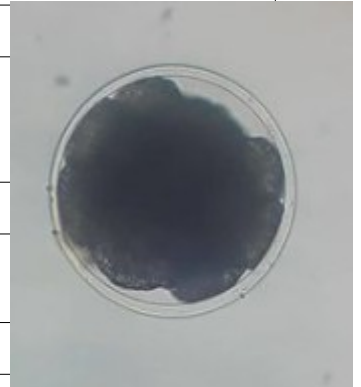
Heirbaan 56A, 1740 Ternat, Belgium

## Program Day 1 (Tuesday 7 September 2021): growout

| <b>Time</b>  | <b>Activity</b>  |
|--------------|--|
| 08:30- 09:00 | Arrival of guests, registration, coffee and croissants   |
| 09:00-10:30  | Technical presentations, Q&A <ul style="list-style-type: none"><li>– Introduction</li><li>– Shrimp Hatchery techniques</li><li>– Shrimp farming techniques</li></ul>                   |
| 10:30-10:45  | Coffee break – Belgian chocolates  |
| 10:45-12:45  | Technical presentations, Q&A <ul style="list-style-type: none"><li>– Shrimp Nutrition and feed management</li><li>– Overview of shrimp feed research at CreveTec test center</li></ul> |
| 12:45-13:30  | Lunch with local, fresh shrimp   |
| 13:30-14:30  | Technical presentations, Q&A <ul style="list-style-type: none"><li>– Shrimp Farming with Bioflocs, water quality management</li></ul>  |
| 14:30-16:00  | Visit farm in small groups of 5 people. Depending on the group, the following languages are possible: Dutch, English, French and Spanish   |
| 16:00-17:00  | Belgian Beer tasting   |
| 17:00-18:00  | Networking and possibility to talk to staff of CreveTec  |

## Program Day 2 (Wednesday 8 September 2021): Reproduction

| Time         | Activity: TP= technical presentation, PW= practical workshop  |
|--------------|---|
| 20:00-20:30  | PW: Selection of fertilized females in maturation facility (on 7/9)   |
| 08:30- 09:00 | Arrival of guests, registration, coffee and croissants  |
| 09:00-10:30  | <ul style="list-style-type: none"> <li>- TP Broodstock nutrition and maturation</li> <li>- TP Hatching</li> <li>- PW Determination of fertilized and non fertilized eggs</li> </ul> |
| 10:30-10:45  | Coffee break – Belgian chocolates   |
| 10:45-12:45  | Visit to Proviron, producer of micro-algae<br>Presentation of results   |
| 12:45-13:30  | Lunch with local, fresh shrimp  |
| 13:30-14:30  | <ul style="list-style-type: none"> <li>- TP Feeding of zoea</li> <li>- PW Microscopic determination of zoea stages and quality</li> <li>- PW counting of algae</li> </ul>           |
| 14:30-16:00  | <ul style="list-style-type: none"> <li>- TP Feeding of mysis</li> <li>- TP Alternatives for artemia nauplii in mysis and early PL feeding</li> </ul>                                |
| 16:00-17:00  | <ul style="list-style-type: none"> <li>- TP postlarval feeding</li> <li>- TP acclimatization of Postlarvae to nursery</li> </ul>  |
| 17:00-18:00  | Q&A   |



## Registration

|   | Day 1 | Day 2 | Day 1+2 |
|---|-------|-------|---------|
| Early bird (payment before 20/8/2021)     | 450   | 950   | 1300    |
| Standard rate                             | 500   | 1000  | 1400    |
| Groups (3 people from the same company)   | 400   | 900   | 1200    |
| Student rate (student card and <25 years) | 400   | 900   | 1200    |

*We can issue a commercial invoice/proforma invoice.*

*Prices are without VAT. If you don't have a company+ VAT nr, 21 % VAT will be added*

Please send the following information to [eric@crevetec.be](mailto:eric@crevetec.be) :

Full name

Company name

Company address

Vat number (in case you need an invoice):

E-mail address:

Phone nr:

Language preferred for farm visit: Dutch-French-English- Spanish

Payment:

I will pay by bank transfer on the account :

CreveTec bv

BE04 7360 0352 7531

Bic( SWIFT): KREDBEBB

Please state your name and company !

I will bring cash and pay on arrival (only standard rate applies)



## Accommodation

The farm can be easily reached by train from Brussels

If you come by train from Brussels, or the airport, you can go to the train station Sint-Martens

Bodegem and let us know your arrival time so we can arrange pickup from the station to the farm (10 minute drive)