

Technical brochure



Overhead
gauge
package

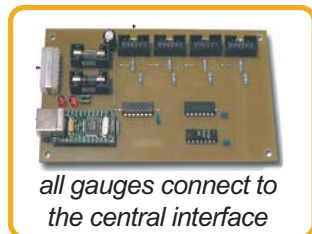


Most survey's held by Flightsim websites puts the Boeing 737NG at the top of the most flown airplane list. This is not even a surprise, given all possible add-ons related to the Boeing aircraft. Also in cockpit building, the B737 seems to be the best choice for flightsimmers. Now Flight Illusion is teaming up with panel makers to bring you the ultimate gauge set next to the Standby instrument set.

Given the shallow depth of our G-STEP product range (1 inch), it is perfectly possible to fit in the gauges in any overhead panel. The 7 gauges are daisy chained to the Central interface module, which can also interact as a I/O module to connect switches as 48 digital inputs or to drive leds (32 digital outputs). The First I/O module is delivered with the Central interface module. Additional units are available.

**FULL
OVERHEAD
PACKAGE
1150,- EUR***
(VAT incl.)

* 1150 EUR (VAT incl.) - 966,50 EUR (excl.VAT)
= 10% off regular shelf price if
purchased separately



all gauges connect to
the central interface

Available gauges

Bleed air duct pressure indicator
Air temperature indicator
Cabin alt / differential pressure indicator
Cabin rate of climb indicator
APU exhaust gas temperature (EGT)
Fuel temperature indicator
Oxygen pressure



**FLIGHTDECK
READY**
737 COCKPIT
READY



Cabin Climb indicator
dual needle

226,00 EUR (VAT incl.)
190,00 EUR (VAT excl)



Oxygen pressure indicator
single needle

130,90 EUR (VAT incl.)
110,00 EUR (VAT excl)



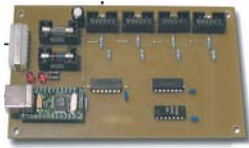
Duct pressure indicator
dual needle

226,00 EUR (VAT incl.)
190,00 EUR (VAT excl)



Cabin Climb indicator
single needle

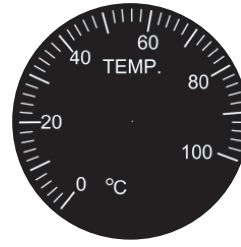
130,90 EUR (VAT incl.)
110,00 EUR (VAT excl)



Central interface module

Not necessary if purchased with other gauges

119,00 EUR (VAT incl.)
100,00 EUR (VAT excl)



Outside temperature indicator
single needle

130,90 EUR (VAT incl.)
110,00 EUR (VAT excl)



APU exhaust gas temperature (EGT) indicator
single needle

130,90 EUR (VAT incl.)
110,00 EUR (VAT excl)



Cabin Climb indicator
single needle

130,90 EUR (VAT incl.)
110,00 EUR (VAT excl)

How to mount the gauges



The overhead gauges are delivered without the round bezel. The instrument is mounted to the back of the overhead panel and fixed by screws from the front or by dual sided tape. The second part is the round bezel that is placed from the front. It is possible to use the original bezel that is delivered with the overhead panel.

Features

- Compatible with Windows ME, 2000, and XP.
- Compatible with Flight Simulator® 2002/2004*
- gauges can be used with overhead panels from Flight Deck Solution and Engravity.
- G-STEP technology for smooth operation
- USB interface and daisy chain
- USB interface

* Flight Simulator does not emulate the overhead logic. You will need PMsystems from Project Magenta to have the gauges work.

for more information: contact us at www.flightillusion.com